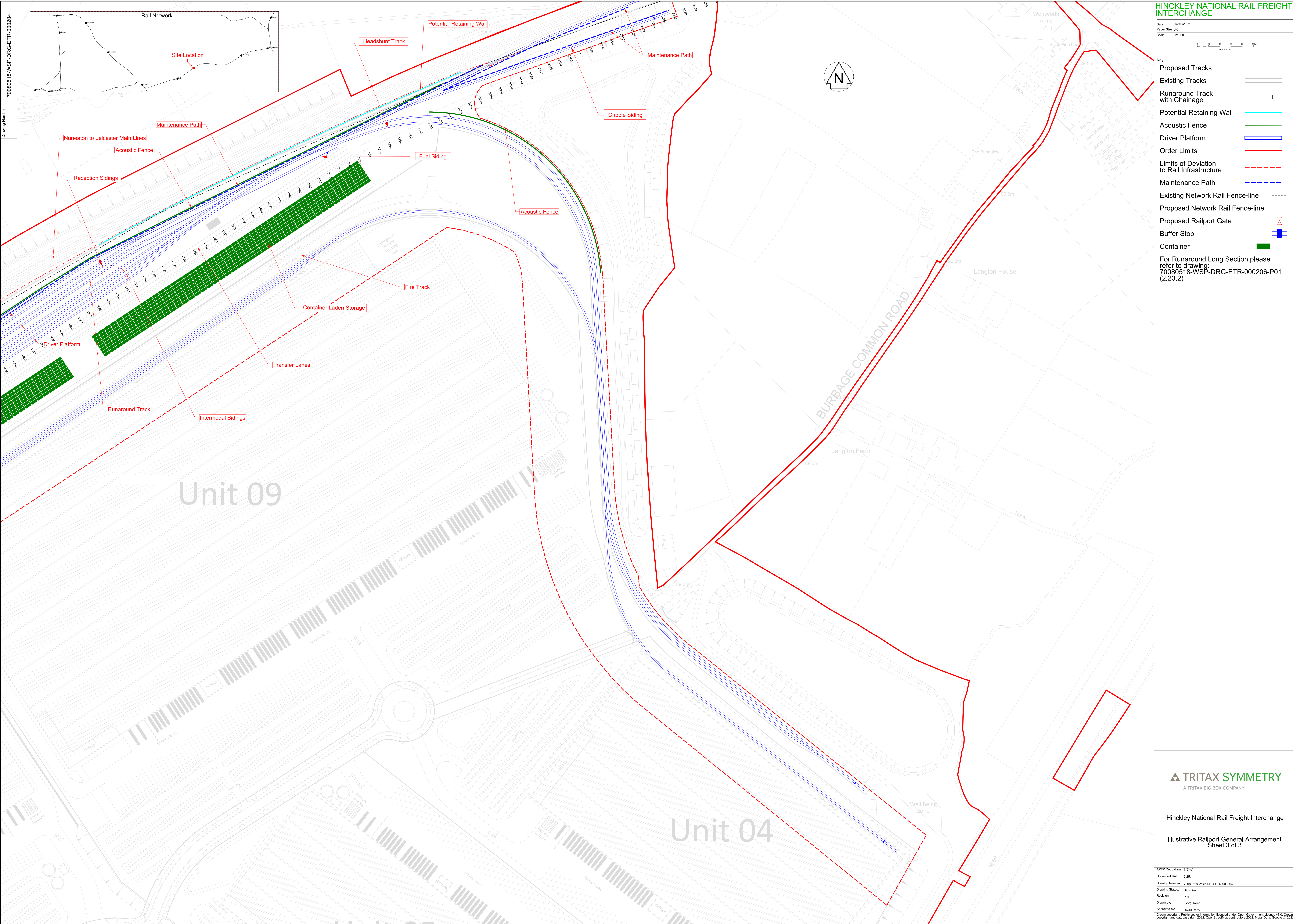


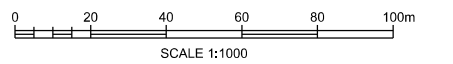
Rail Network

Site Location



### HINCKLEY NATIONAL RAIL FREIGHT INTERCHANGE

Date: 14/10/2022  
Paper Size: A0  
Scale: 1:1000



- Key:
- Proposed Tracks
  - Existing Tracks
  - Runaround Track with Chainage
  - Potential Retaining Wall
  - Acoustic Fence
  - Driver Platform
  - Order Limits
  - Limits of Deviation to Rail Infrastructure
  - Maintenance Path
  - Existing Network Rail Fence-line
  - Proposed Network Rail Fence-line
  - Proposed Railport Gate
  - Buffer Stop
  - Container

For Runaround Long Section please refer to drawing: 70080518-WSP-DRG-ETR-000206-P01 (2.23.2)



Hinckley National Rail Freight Interchange  
Illustrative Railport General Arrangement  
Sheet 3 of 3

ADPP Regulation:	52(1)(c)
Document Ref:	2.25.4
Drawing Number:	70080518-WSP-DRG-ETR-000204
Drawing Status:	S4 - Final
Revision:	PG1
Drawn by:	Georgi Reef
Approved by:	David Parry

© Crown copyright and database right 2022. OpenStreetMap contributors 2022. Maps Data: Google © 2022